

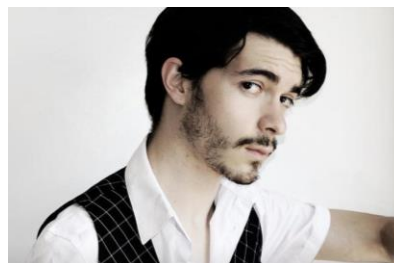
Chris Browne Valenzuela

Actor | Singer

929-215-1694

chrisbvalenzuelaactor@gmail.com

Voice Range: Eb2-A4



Film & TV Highlights:

Production	Character	Company	Director
Vigilant	Derrick (supporting)	NYFA	Brandi Kneedly
Lark & Spur	Arden (series regular)	Nishi Rajan	Louis Bacigalupo
Bathroom Planet	Luna (Lead)	NYFA	Momo Kirimichi

Professional Theater Highlights:

Production	Character	Company	Director
Arpilleras	Cristián (Lead)	Secret Theater	Francine Torres
Sagueros	Xavier (Lead)	JACK NY	Sofía Ubilla
Tomás and the Library Lady	Florencio/Papá Grande	Mill Mountain Theater	Michelle LoRicco
Safe & Sound	Cooper (supporting)	Front Row Fringe Festival	Holly Block
Hacienda	Antonio (lead)	Selma Arts Center	Rodolfo R Cruz
Brooklyn's Bridge	Thomas Nast	CITSTS	Ray Roderick
Les Misérables	Legles/Constable	GPA	Ramón Gutiérrez

University Theater Highlights:

Production	Character	University	Director
Into the Woods	Rapunzel's Prince/Florinda	Circle in the Square Theatre School	Jeanne Slater
The Comedy of Errors	Angelo/Balthazar/Courtesan	Circle in the Square Theatre School	Ed Berkeley
Les Misérables	The Bishop/Legles	U. Católica de Chile	Ramón Gutiérrez
Jesus Chris Superstar	Pontius Pilate	U. Católica de Chile	Víctor Romero

Training

Circle in the Square Theatre School, NYC – Musical Theater Conservatory	
Acting: Alan Langdon, Kevin McGuire, Maria Tucci	Voice: Lucille S. Rubin, Ph.D., Dianna Cortez
Shakespeare: Edward Berkeley, Sybil Lines	Speech/Dialects: Shannon Marie Sullivan, Elizabeth Loughran
Movement: Randolyn Zinn, Christine Sang	Singing Technique: Beth Falcone, Christine de Frece, Shan Y. Chuang
Stage Combat: Brad Lemons, Dan Renkin	Singing Interpretation: Sara Louise Lazarus
Acting Technique: Jacqueline Jacobus	Clown/Comedy/Improvisation: Nancy Smithner, Ph.D.
Music Theory: Natalie Wilson	Mask: Shelley Wyant, Patrick Horn
On-Camera: Zachary Spicer, Shannon Marie Sullivan	
Dance: Jeanne Slater	

Special Skills:

Languages: Fluent in Spanish (native) and English (certified by Cambridge's FCE and ETS' TOEFL.)

Accents and Dialects: British (URP and MRP), various Hispanic accents. IPA proficient.

Dance: Chilean Folk, basic jazz, tap, and ballroom dancing.

Instruments: Trained in classical piano by maestro Gustavo Ruiz. Basic Guitar.

Other: Industrial Engineer with a Diploma in Transports Engineering from PUC, basic roller skating, horse noises.